



# MONTHLY MEMBERSHIP PROGRESS REPORT

District 2 S4

Results as of: 6/30/2015

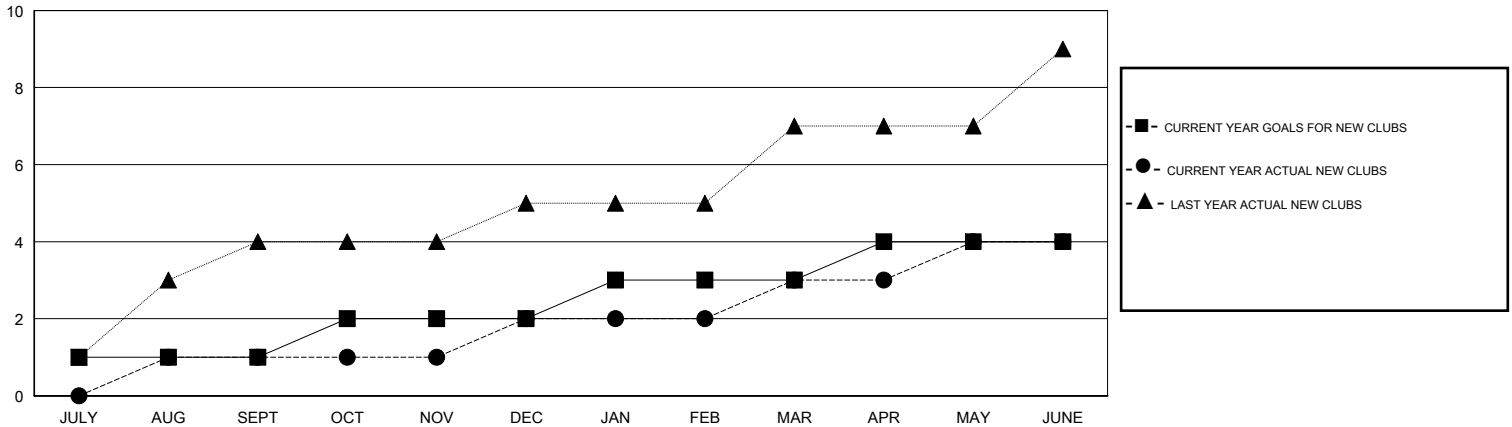
GMT: HAL GRIFFIN

LOCATION TEXAS

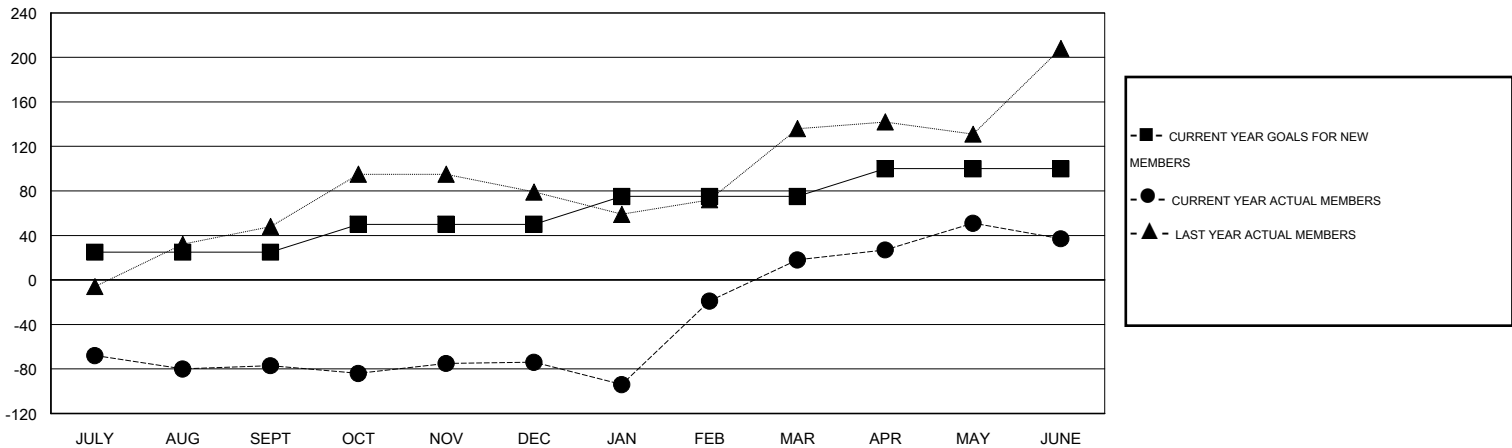
GMT CA 1

Clubs					Members				
RESULTS FOR 2014-2015					RESULTS FOR 2014-2015				
QUARTER	NEW CLUB GOAL	NEW CLUBS	DROPPED CLUBS	NET GAIN/LOSS	QUARTER	NEW MEMBER GOAL	CHARTER AND NEW MEMBERS ADDED	DROPPED MEMBERS	NET GAIN/LOSS
JULY/AUG/SEPT	1	1	1	0	JULY/AUG/SEPT	25	116	193	-77
OCT/NOV/DEC	1	1	0	1	OCT/NOV/DEC	25	112	109	3
JAN/FEB/MAR	1	1	0	1	JAN/FEB/MAR	25	179	87	92
APR/MAY/JUNE	1	1	1	0	APR/MAY/JUNE	25	129	110	19

GOALS AND ACTUAL NEW CLUBS CUMULATIVE



GOALS AND ACTUAL MEMBERS CUMULATIVE



DROPPED CLUBS: 2	66 CLUBS OF 87 ADDED 1 OR MORE NEW MEMBERS	<b>GENDER DISTRIBUTION</b>
		MALE 1,531 (59.57%)
		FEMALE 1,039 (40.43%)
<b>DROPPED MEMBERS</b>	<a href="#">CLICK HERE FOR HEALTH ASSESSMENT DATA</a>	<b>FAMILY UNIT MEMBERS</b> 443
DECEASED 24		HEAD OF HOUSEHOLD 218
CLUB CANCELLED 0		NON-HEAD OF HOUSEHOLD 225
OTHER 475		
<b>TOTAL 499</b>		